

# COMFORT AIR CURTAIN



New design new numerical control alveolate grid, by super slim entire casing, made from galvanised steel. The entire machine has an arched geometric design, It easy installation, clean and maintenance, besides, saving space. With an uniquely designed wind flow baffle, it can produce wind in all directions, working well in various environments. It can be operated by remote control or button-touch. It has high and low speed switch functions.

## PRODUCT INTRODUCTION

As one of the new top-class products for modern decoration, air curtain is also matched with the air-conditioner. And it is installed at the entrances of supermarket, theater, hotel, office room, working shop and storeroom to prevent the dust, mosquito and noxious air, and so on.

## PRODUCT FEATURES

### LUXURY MATERIALS

High efficient motor with thermal protector can operate continuously 5000h without failure. Higher air volume with superior performance.

### EASY OPERATION

Special design of air deflection vane enables to adjust the air direction easily. Two speeds controlled by the remote control or key switch.

### CHARMING DESIGN

Silver aluminum sand blast shell, 3D shape design, newly aluminum bar air intake panel.

## COMFORT APPLICATIONS

Designed for the door of store, restaurant, retail shop, sports center and station etc.

## COMFORT AIR CURTAIN TECHNICAL SPECIFICATIONS

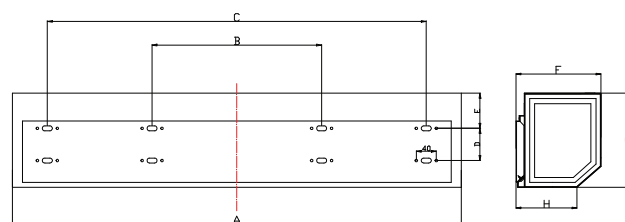
MODEL	Volt. (V~)	Freq (Hz)	Max input power (W)	Max air speed (m/s)	Air volume (m <sup>3</sup> /h)		Noise (dB)		Net weight (Kg)
			H	H	H	L	H	L	
ICEBFM-3509AY	220-240	50/60	130	11.5	1400	1100	57	55	8
ICEBFM-3510AY			140		1585	1330	57	55	9
ICEBFM-3512AY			180		1900	1600	58	56	10
ICEBFM-3515AY			230		2500	2000	59	57	11.5
ICEBFM-3518AY			260		2800	2200	61	59	15.5
ICEBFM-3520AY			280		3170	2660	63	61	17

## PRODUCT INTRODUCTION

MODEL	Power (W)	Voltage (V~)	Frequency (Hz)
ICEBFM-3509AY	160	220/240	50/60
ICEBFM-3510AY	180		
ICEBFM-3512AY	200		
ICEBFM-3515AY	230		
ICEBFM-3518AY	300		
ICEBFM-3520AY	350		

## MOUNTING HEIGHT : 3 - 2.5 M

## IDENTIFICATION & INSTALLATION DIMENSIONS

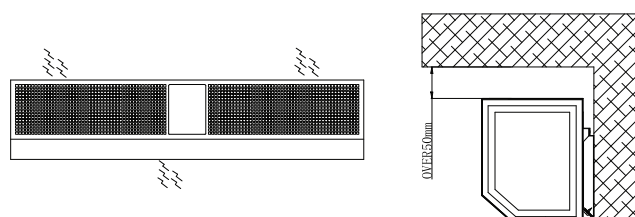


MODEL	A	B	C	D	E	F	G	H
ICEBFM-3509AY	900	440	760	64	70	175	195	123
ICEBFM-3510AY	1000		860					
ICEBFM-3512AY	1200		1060					
ICEBFM-3515AY	1500		1360					
ICEBFM-3518AY	1800		1660					
ICEBFM-3520AY	2000		1860					

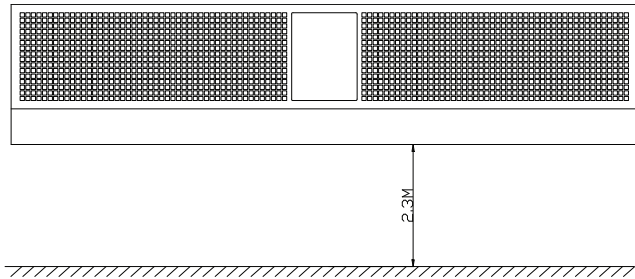
## INSTALLATION CAUTION

Please follow the following requirements when installing air curtain:

- A-** Please install the unit in a sturdy place to avoid any shaking.
- B-** Please install the unit inside the room.

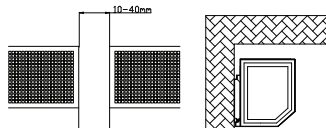


**C-** Don't install the unit too low, no less than 2.3 meter from the ground.

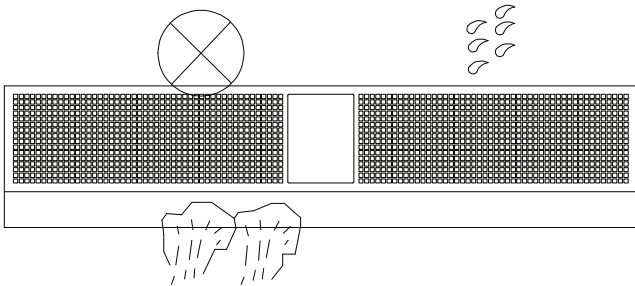


**D-** When the entrance is wider than the unit, it is recommended to install two or more units in parallel. In this case, provide 40-20mm gaps between the units.

**E-** Don't allow gaps between the unit and the wall. When hanging it from the ceiling, using the enclosed ceiling brackets.

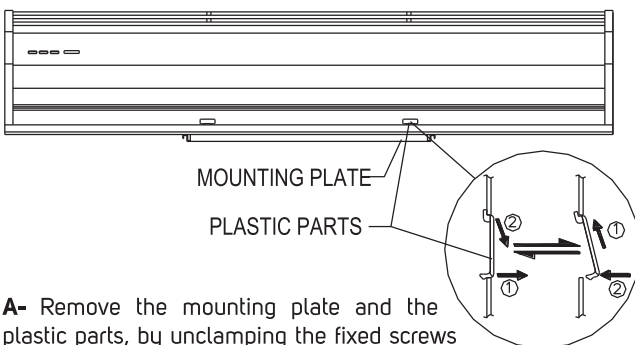


**F-** Don't install the unit in a place where it is splashed by water, exposing to excessive steam, explosive gas or corrosive gas.



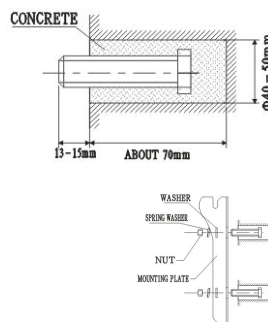
## INSTALLATION

### 1- INSTALLING ON THE CONCRETE WALL:



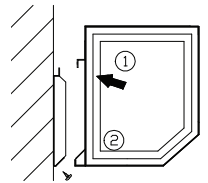
**A-** Remove the mounting plate and the plastic parts, by unclamping the fixed screws on the back of main body to remove the mounting plate.

**B-** Fix the bolts in the proper position to secure it.



**C-** When the cement has dried up, fit the mounting plate (use the washer and nut according to the following).

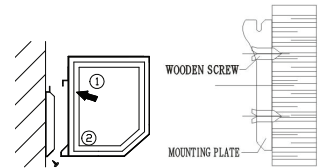
**D-** Install the main body Set the main body onto the upper end of the mounting plate and clamp it as shown.



### 2- INSTALLING ON THE WOODEN WALL

**A-** Fix the mounting plate in the proper positions with tapping screw.

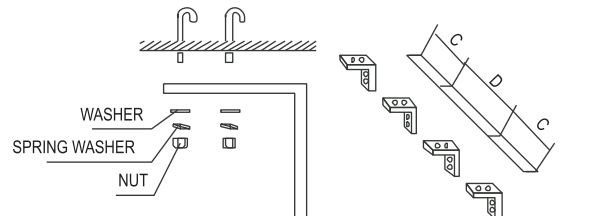
**B-** Same as the step D of 1.



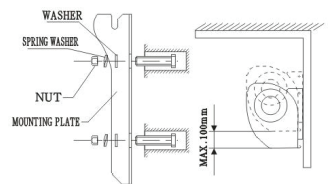
### 3- HANGING FROM THE CEILING

**A-** Remove the mounting plate from main body (Same as step A from 1).

**B-** Fixing ceiling brackets as Fig.



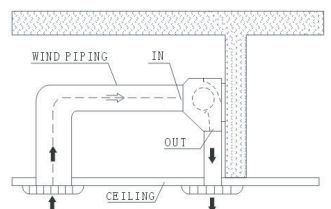
**C-** Set the mounting plate on the ceiling brackets and ensure safe & fixing (use the bolts attached to the ceiling brackets as Fig. Using the ceiling brackets to hang from the ceiling, the position of mounting plate can be.



**D-** Do the same as step 1 to install the main body.

**E-** Fix the air curtain as in the procedure for installing on the concrete wall.

**F-** Then pipe as right Fig. Instructs.



### WIRING DIAGRAM

Two speeds infrared remote controlled wiring diagram

